

# AmaDahlia

By

Hank Schrader, River Cruise Expert

Photos Anne Schrader, River Cruise Expert

# AmaDahlia Overview

- The AmaDahlia is a classic Nile River cruise ship built in 2021, serving 72 guests, with 36 staterooms, with 5 decks. On-board Facilities include:
- The 2-deck high Atrium (Lobby Hall) houses the boat's Reception Desk, Cruise Director's Office Desk (all on deck 2), Boutique Gift Shop (3<sup>rd</sup> deck), and the ship entrances (portside and starboard).
- The ship has an elevator for access to decks 1-4.
- The ship's restaurants include the Dining Room Restaurant (deck 3) and The Chef's Table (deck 4), an al fresco restaurant.
- There is a lounge with a bar on deck 4.
- The Sun Deck (deck 5) is teak-floored; has an unheated swimming pool; and chairs, tables and loungers. There is a bar area towards the aft of the sun deck.
- On deck 1, there is a fitness room and a spa/hairstylist salon.



# AmaDahlia

Photo AmaWaterways



# Cruise Manager Atrium Area



Photo Anne Schrader  
[www.dreamdestinations.com](http://www.dreamdestinations.com)

# Reception



Photo Anne Schrader [www.dreamdestinations.com](http://www.dreamdestinations.com)

# Gift Shop



Photo Anne Schrader [www.dreamdestinations.com](http://www.dreamdestinations.com)

# Sitting Area outside gift shop





# Elevator



Photo Anne Schrader [www.dreamdestinations.com](http://www.dreamdestinations.com)

# Entrance door 2 floor Staterooms



Photo Anne Schrader [www.dreamdestinations.com](http://www.dreamdestinations.com)

# Sun Deck Unheated Pool



Photo Anne Schrader  
[www.dreamdestinations.com](http://www.dreamdestinations.com)

# Sun Deck Pool



Photo Anne Schrader [www.dreamdestinations.com](http://www.dreamdestinations.com)

# Lounge Area



# Top Deck Bar



Photo Anne Schrader  
[www.dreamdestinations.com](http://www.dreamdestinations.com)

# Sun Loungers

Photo Anne Schrader [www.dreamdestinations.com](http://www.dreamdestinations.com)



# Fitness Area

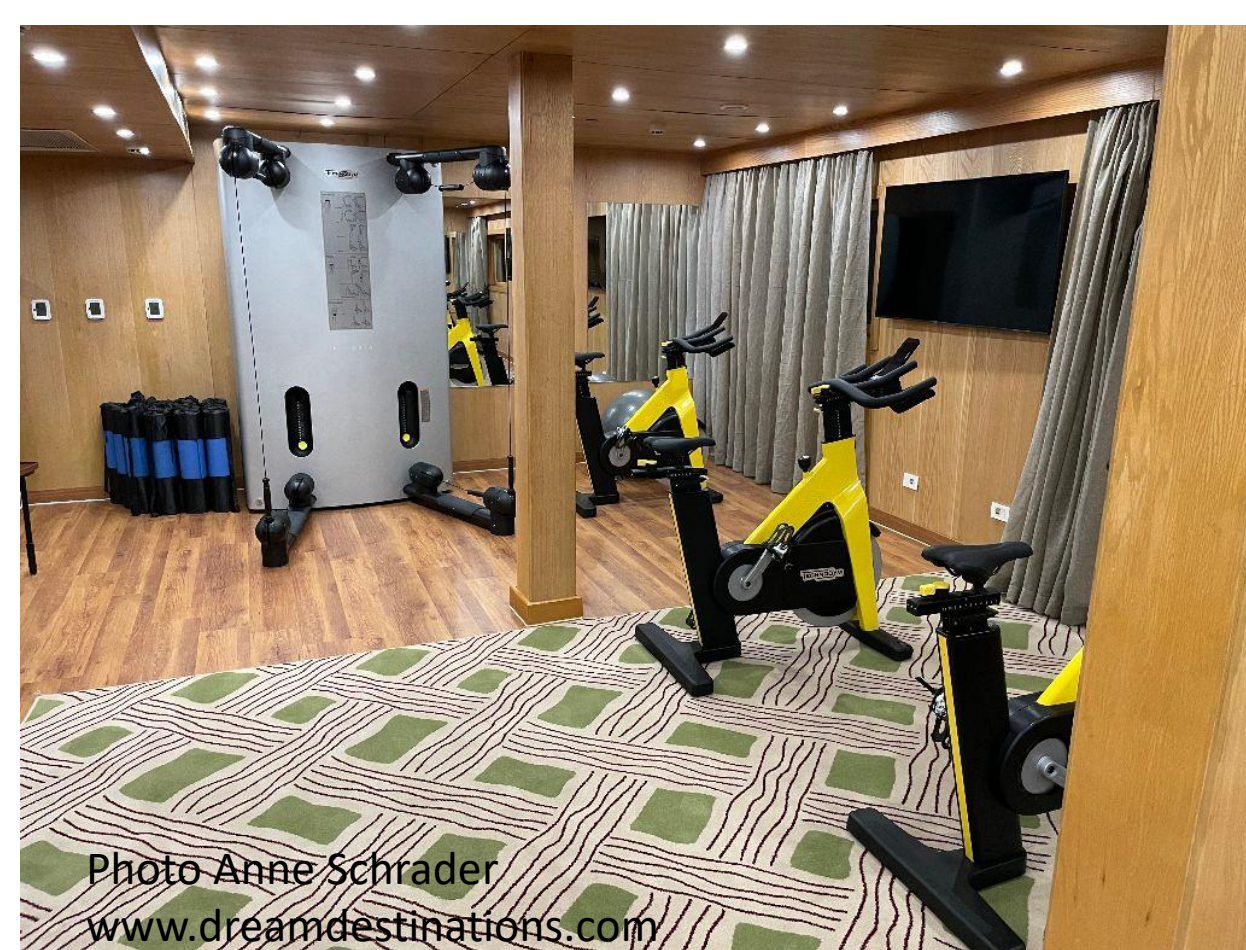


Photo Anne Schrader  
[www.dreamdestinations.com](http://www.dreamdestinations.com)



[www.dreamdestinations.com](http://www.dreamdestinations.com)



# Butterfly Spa/Hairdresser Area



# Dining Options

- The ship's restaurants include the Main Dining Room Restaurant (deck 3). At each meal, a display of the meal options are at the entrance table, so guests can see their choices.
- The Chef's Table on deck 4, is a la carte restaurant with an Egyptian focused menu. Reservations are necessary and it is only open for the dinner meal.
- Complimentary beer and wine by the glass are served at both dining venues. The wines are limited to Egyptian wines and sometimes South African wines.

# Dinning Room Ready for Lunch. Cook area at back on the left



# Empty Dinning Room



Photo Anne Schrader [www.dreamdestinations.com](http://www.dreamdestinations.com)



# Main Dining Room

Photo Anne Schrader  
[www.dreamestinations.com](http://www.dreamestinations.com)

# Ready For a Meal

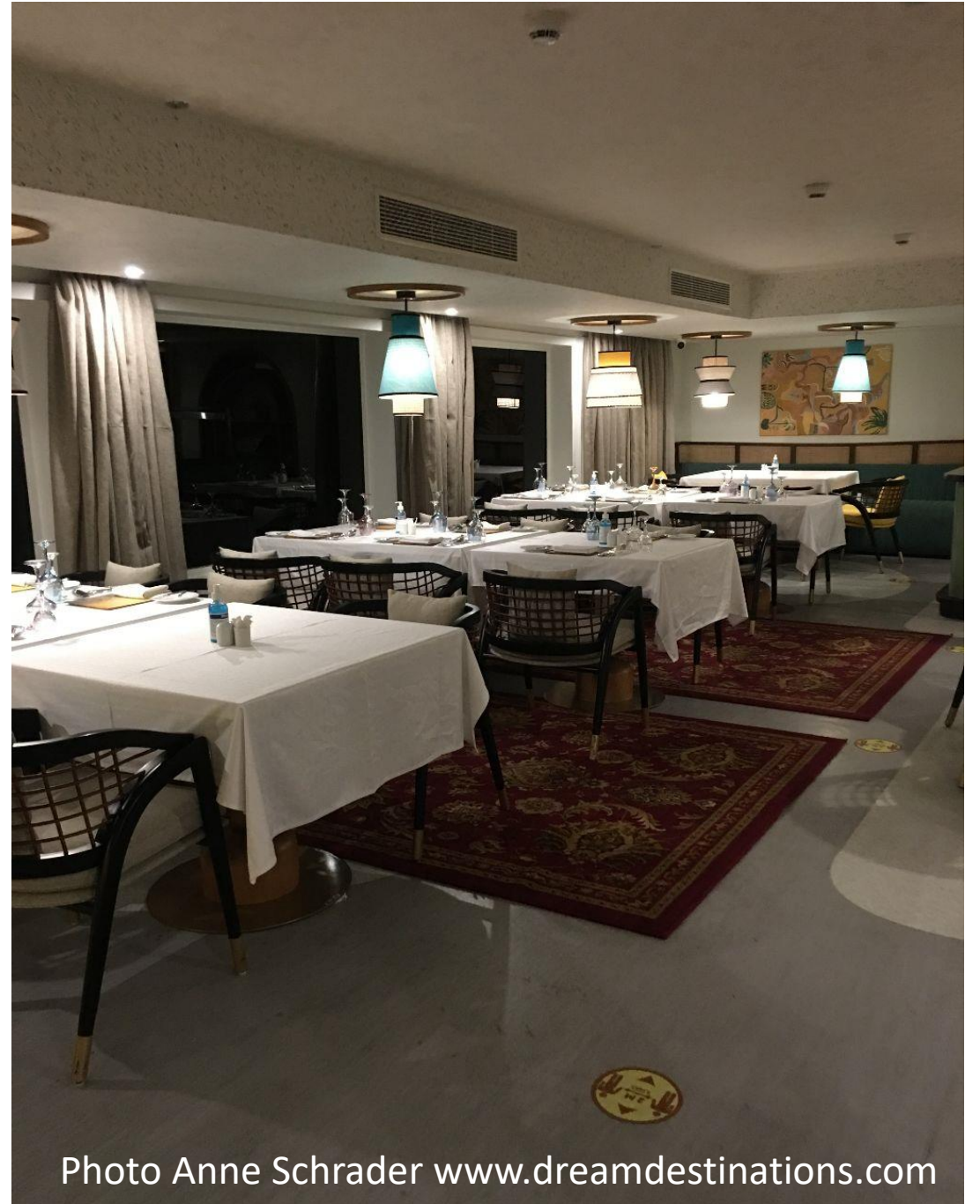


Photo Anne Schrader [www.dreamdestinations.com](http://www.dreamdestinations.com)

# Dinning Nook



Photo Anne Schrader [www.dreamdestinations.com](http://www.dreamdestinations.com)

# Breakfast Breads





# A Harty Breakfast Meal



Photo Anne Schrader  
[www.dreamdestinations.com](http://www.dreamdestinations.com)

# Breakfast Omelet



# Dinning Display



Photo Anne Schrader [www.dreamdestinations.com](http://www.dreamdestinations.com)

# Dinning Display



Photo Anne Schrader [www.dreamdestinations.com](http://www.dreamdestinations.com)

# Salad



Photo Anne Schrader [www.dreamdestinations.com](http://www.dreamdestinations.com)

# Another Salad



Photo Anne Schrader [www.dreamdestinations.com](http://www.dreamdestinations.com)

# Chicken Entree



Photo Anne Schrader  
[www.dreamdestinations.com](http://www.dreamdestinations.com)

# Dessert





# Another Food Display



Photo Anne Schrader [www.dreamdestinations.com](http://www.dreamdestinations.com)

# The Chef's Table

- The Chef's Table is an Al Fresco venue, located on deck 4.
- Reservations are required.
- This is not a tasting menu like in Europe on AmaWaterways. All dishes highlight Egyptian cuisine.
- The meal consists of an appetizer, a couple of smaller items, a choice of entrées, and a desert.

# Al Fresco Chef's Table Venue



Photo Anne Schrader [www.dreamdestinations.com](http://www.dreamdestinations.com)

# Chef's Table



# Chef's Table Main Course



[www.dreamdestinations.com](http://www.dreamdestinations.com)



# Birthday Celebrations Always Available



# Visit Dream Destinations

## *Your Journey Begins Here!*

*Dream Destinations*



*Your journey begins here!*

- **We want to be your travel consultants!**
- **Please contact us at:**
- [aschrader@dreamdestinations.com](mailto:aschrader@dreamdestinations.com) or
- [hschrader@dreamdestinations.com](mailto:hschrader@dreamdestinations.com) or
- Call us at:
- 832-244-0215 (Anne cell); 713-397-0188 (Hank Cell)
- Or visit at [www.dreamdestinations.com](http://www.dreamdestinations.com)
- [www.pinterest.com/visitdd](http://www.pinterest.com/visitdd) or
- [www.facebook.com/visitdreamdestinations](http://www.facebook.com/visitdreamdestinations)



**Let Us Plan your next vacation!**

Call Hank (713-397-0188) or

Anne (832-244-0215)

